

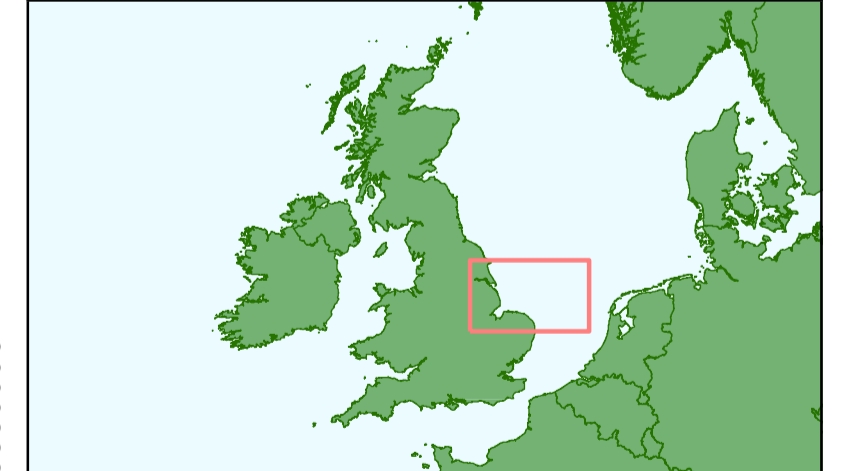
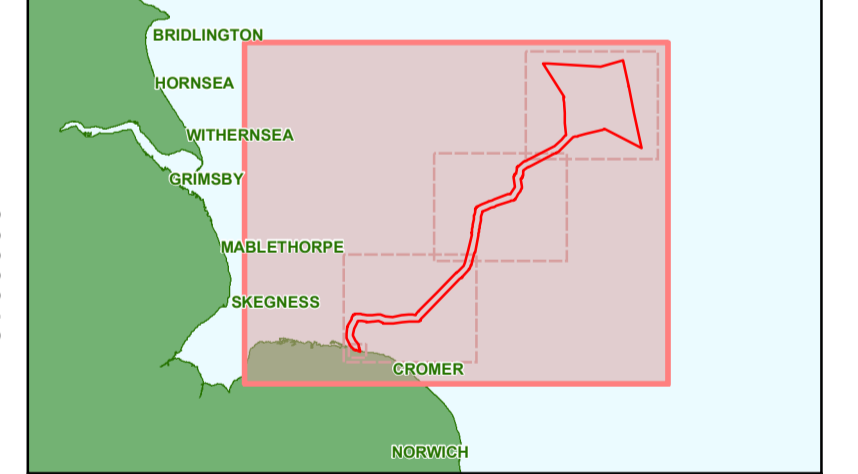
# Hornsea Project Three Offshore Wind Farm Offshore Order Limits and Grid Coordinates Plan Index Sheet

APPF Regulations Reference: S(2)(j)(ii) Application Document Number: A2.2.1

- Hornsea Project Three**
- Order limits node (point)\*
  - Ⓢ Limit of Deviation node (point)\*\*
  - Offshore HVAC booster station node (point)\*\*\*
  - ▭ Order Limits (offshore)
  - ▭ Limit of Deviation (excluding temporary construction area)
  - ▭ Offshore wind farm array area
  - ▭ Offshore export cable corridor
  - ▭ Offshore HVAC booster station search area

**Note :**  
 \* Order Limit node point coordinates are presented on sheet 5  
 \*\* Limit of Deviation node point coordinates are presented on sheet 5  
 \*\*\* Offshore HVAC booster station search area node point coordinates are presented on sheet 5  
 Due to the complexity of the shape, only key co-ordinates are displayed in the table. Do not recreate vector data (GIS/CAD) from coordinates in the table. If vector data is required, please contact a member of the Orsted GIS team.

Source:  
 Agreement For Lease © Crown Copyright 2016, all rights reserved.  
 © Crown copyright and database rights 2012 Ordnance Survey. Licence number: 0100031673

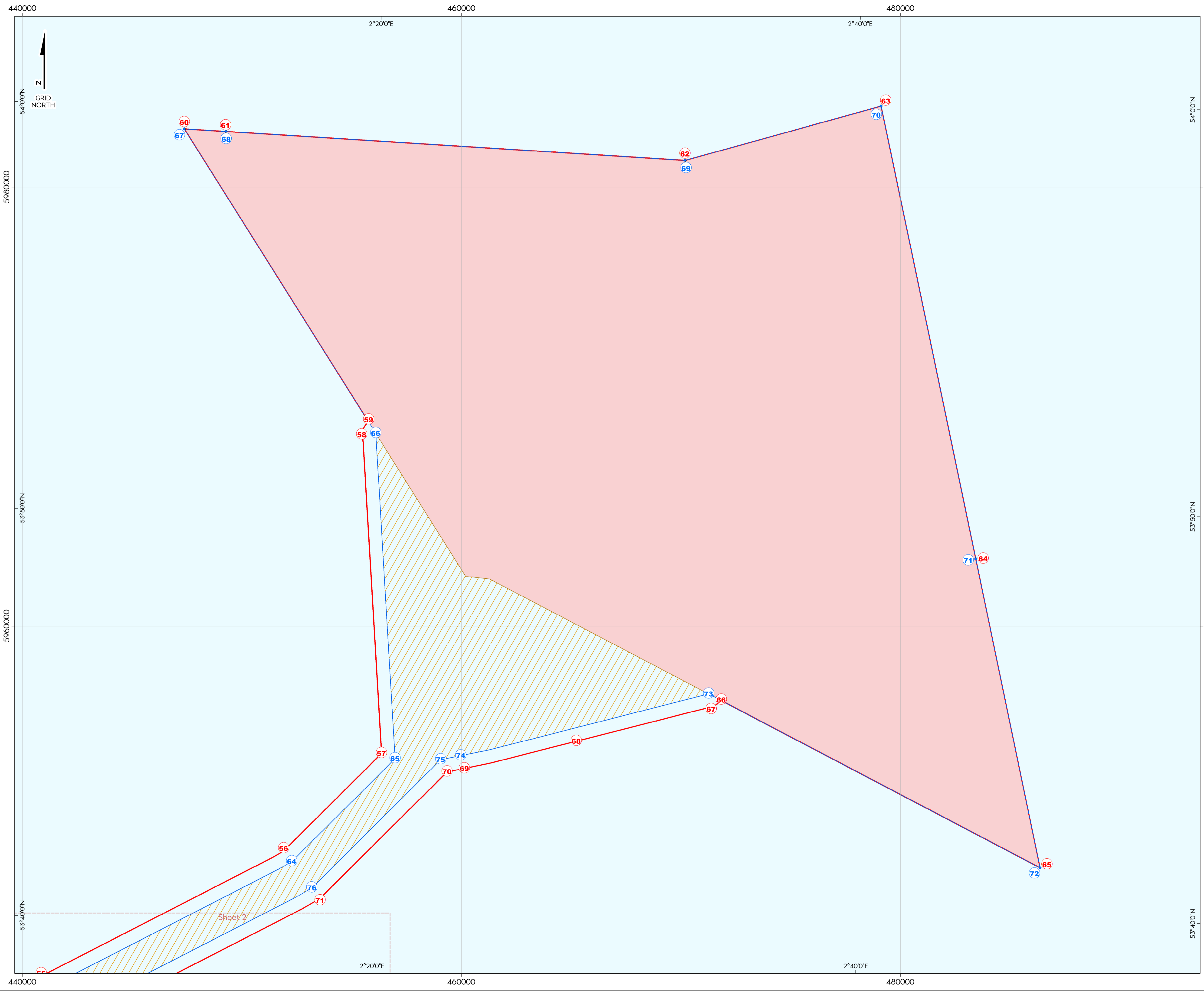


Coordinate system: ETRS 1989 UTM Zone 31N  
 Vertical reference: LAT  
 Scale @ A1: 1:250000  
 0 2.5 5 10 15 Kilometres  
 0 1 2 4 6 8 Nautical Miles

REV	REMARK	DATE
00	First Issue	May 2018
01	Second Issue	March 2019
—	—	—
—	—	—
—	—	—

Hornsea Project Three Offshore Wind Farm  
 APPF Regulations Reference: S(2)(j)(ii)  
 Application Document Number: A2.2.1  
 Document no: HORNSEAAPP13  
 Created by: XAMI  
 Checked by: FELBS  
 Approved by: ANGLUY





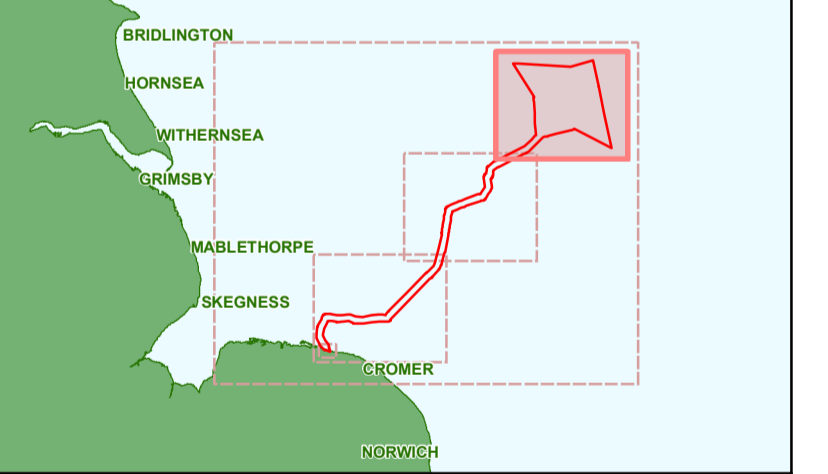
# Hornsea Project Three Offshore Wind Farm Offshore Order Limits and Grid Coordinates Plan Sheet 1 of 5

APPF Regulations Reference: S2(1)(11) Application Document Number: A2.2.1

- Hornsea Project Three**
- Order limits node (point)\*
  - Limit of Deviation node (point)\*\*
  - Order Limits (offshore)
  - Limit of Deviation (excluding temporary construction area)
  - Offshore wind farm array area
  - Offshore export cable corridor

**Note :**  
 \* Order Limit node point coordinates are presented on sheet 5  
 \*\* Limit of Deviation node point coordinates are presented on sheet 5  
 \*\*\* Offshore HVAC booster station search area node point coordinates are presented on sheet 5  
 Due to the complexity of the shape, only key co-ordinates are displayed in the table. Do not recreate vector data (GIS/CAD) from coordinates in the table. If vector data is required, please contact a member of the Orsted GIS team.

Source:  
 Agreement For Lease © Crown Copyright 2016, all rights reserved.  
 © Crown copyright and database rights 2019 Ordnance Survey. Licence number: 0100031673

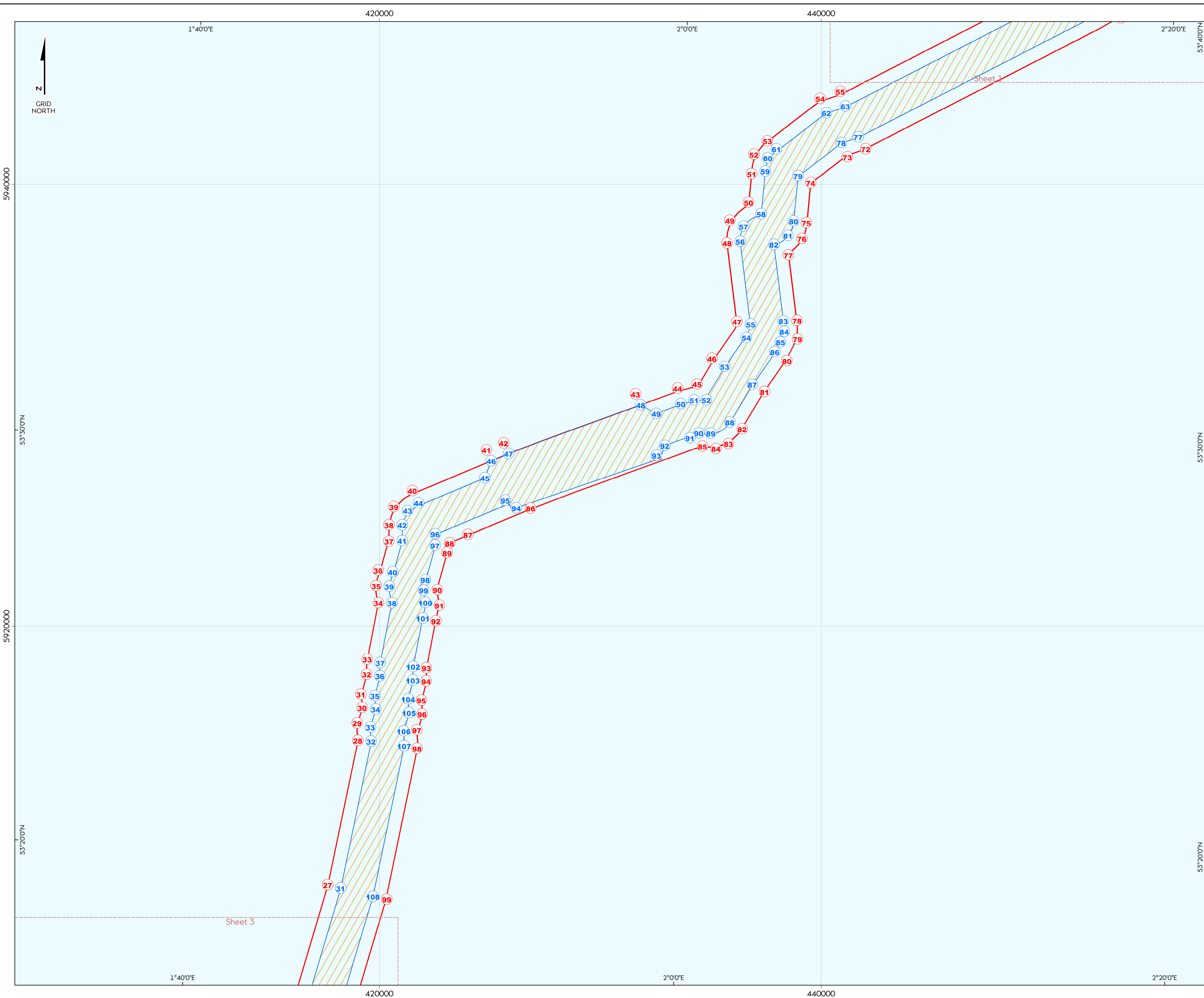


Coordinate system: ETRS 1989 UTM Zone 31N  
 Vertical reference: LAT  
 Scale @ A1: 1:80000  
 0 2.5 5 Kilometres  
 0 1 2 Nautical Miles

REV	REMARK	DATE
00	First Issue	May 2018
01	Second Issue	March 2019
—	—	—
—	—	—
—	—	—

Hornsea Project Three Offshore Wind Farm  
 APPF Regulations Reference: S2(1)(11)  
 Application Document Number: A2.2.1  
 Document no: HORNSEAAPP13  
 Created by: XAMJ  
 Checked by: FELBS  
 Approved by: ANGLUY





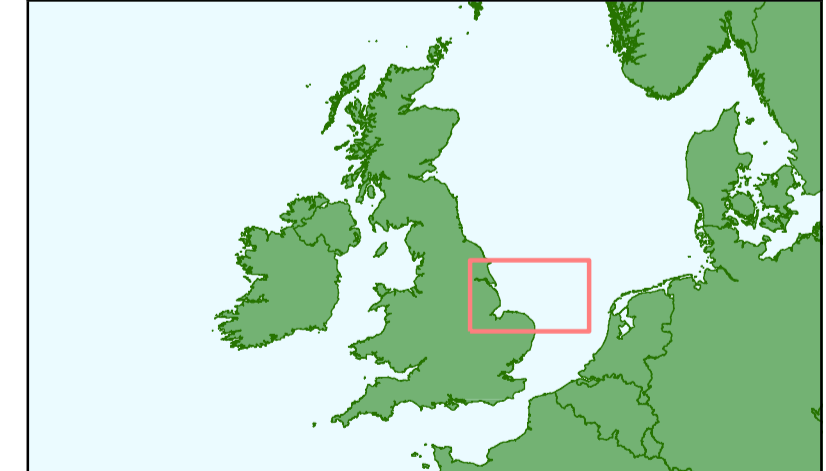
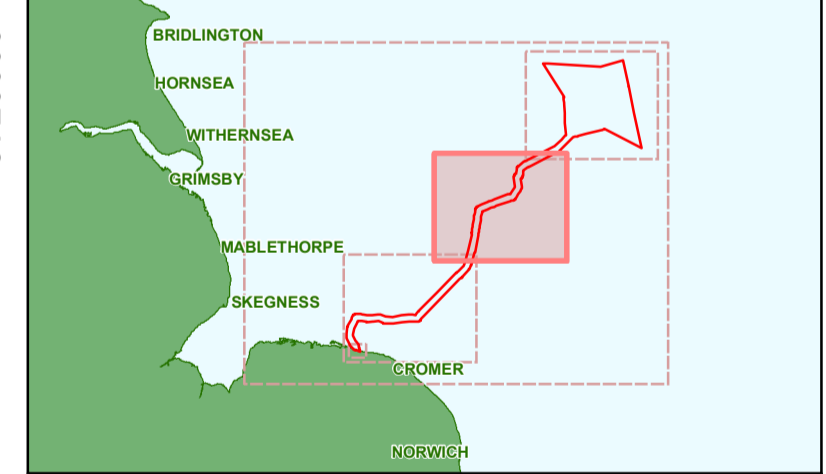
# Hornsea Project Three Offshore Wind Farm Offshore Order Limits and Grid Coordinates Plan Sheet 2 of 5

APPF Regulations Reference: S2(I)(II) Application Document Number: A2.2.1

- Hornsea Project Three**
- Order limits node (point)\*
  - Limit of Deviation node (point)\*\*
  - Order Limits (offshore)
  - Limit of Deviation (excluding temporary construction area)
  - ▨ Offshore export cable corridor

**Note :**  
 \* Order Limit node point coordinates are presented on sheet 5  
 \*\* Limit of Deviation node point coordinates are presented on sheet 5  
 \*\*\* Offshore HVAC booster station search area node point coordinates are presented on sheet 5  
 Due to the complexity of the shape, only key co-ordinates are displayed in the table. Do not recreate vector data (GIS/CAD) from coordinates in the table. If vector data is required, please contact a member of the Orsted GIS team.

Source:  
 Agreement For Lease © Crown Copyright 2016, all rights reserved.  
 © Crown copyright and database rights 2019 Ordnance Survey. Licence number: 0100031673

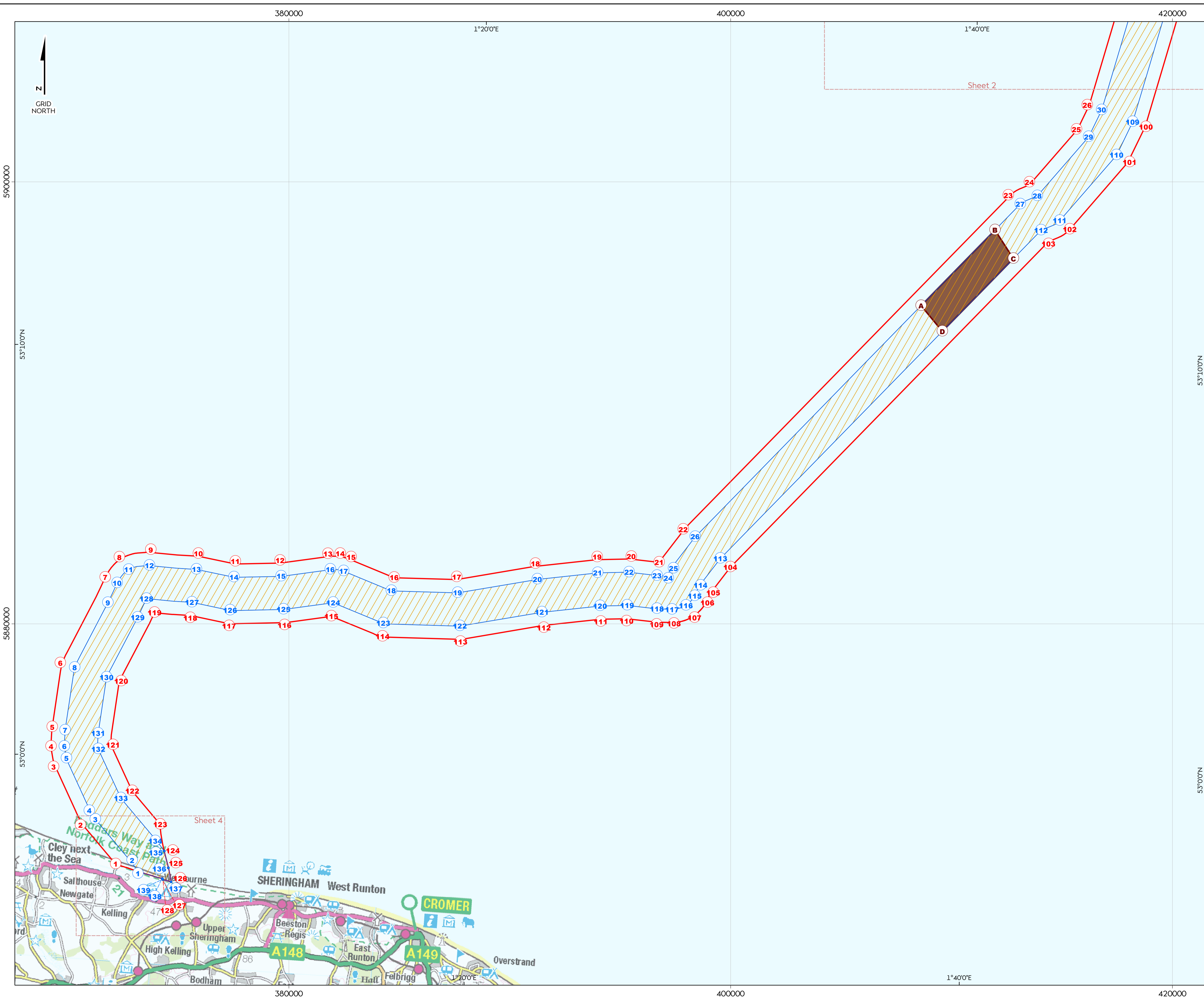


Coordinate system: ETRS 1989 UTM Zone 31N  
 Vertical reference: LAT  
 Scale @ A1: 1:80000

REV	REMARK	DATE
00	First Issue	May 2018
01	Second Issue	March 2019
—	—	—
—	—	—
—	—	—

Hornsea Project Three Offshore Wind Farm  
 APPF Regulations Reference: S2(I)(II)  
 Application Document Number: A2.2.1  
 Document no: HONW3APP13  
 Created by: XAMJ  
 Checked by: FELBS  
 Approved by: ANGLUY



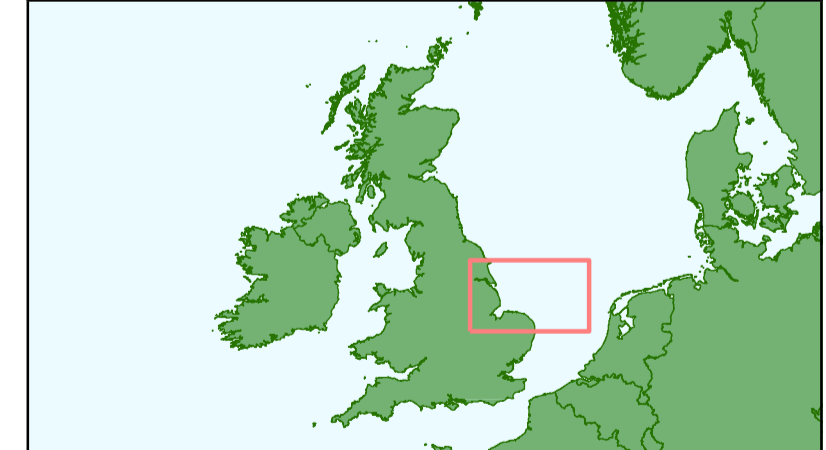
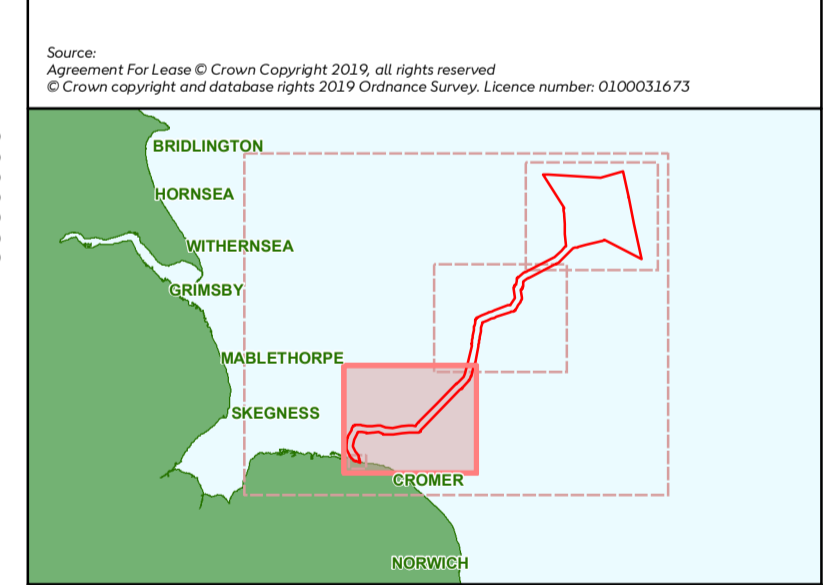


# Hornsea Project Three Offshore Wind Farm Offshore Order Limits and Grid Coordinates Plan Sheet 3 of 5

APPF Regulations Reference: S2(I)(11) Application Document Number: A2.2.1

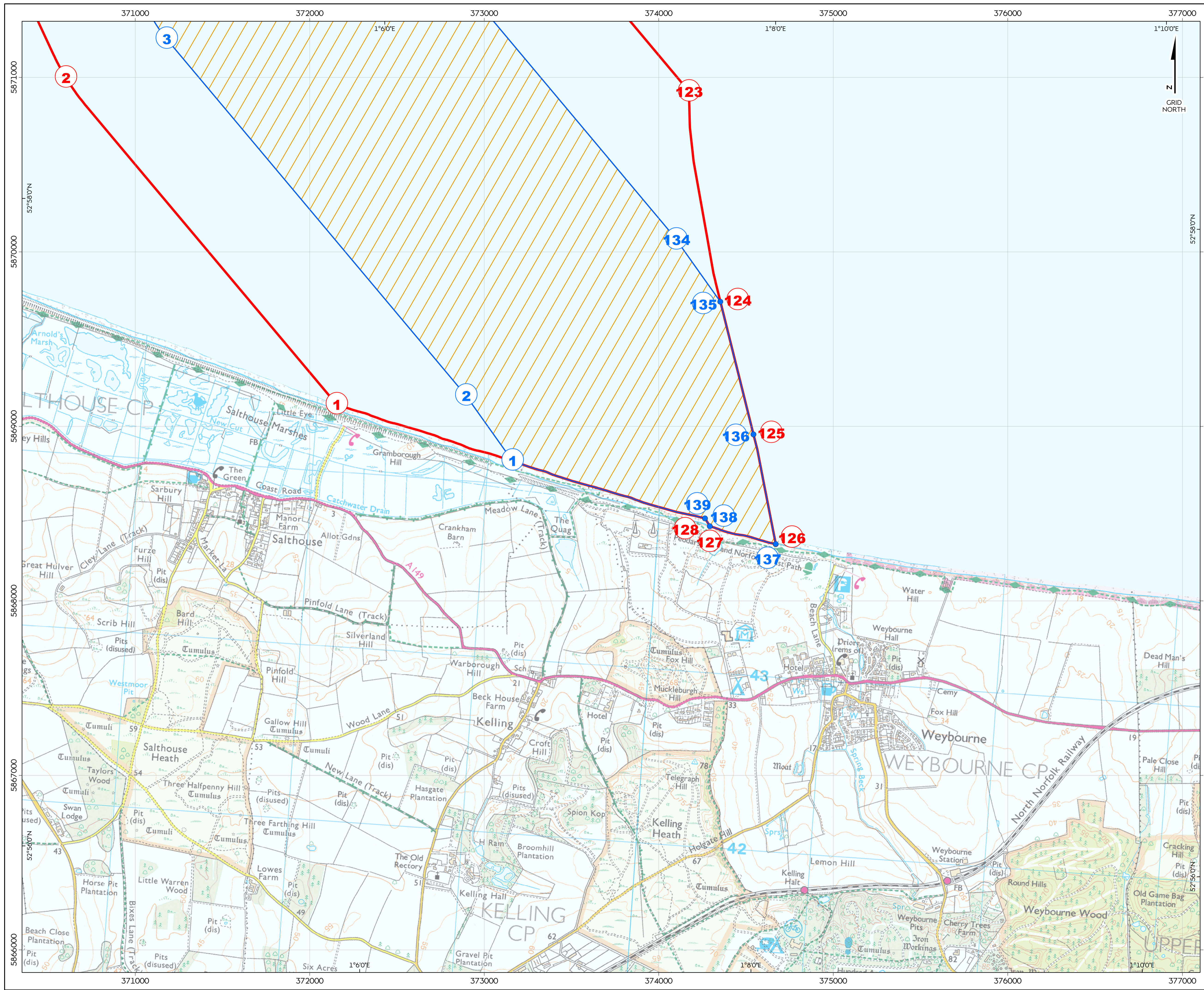
- Hornsea Project Three**
- ① Order limits node (point)\*
  - ② Limit of Deviation node (point)\*\*
  - Ⓐ Offshore HVAC booster station node (point)\*\*\*
  - Order Limits (offshore)
  - Limit of Deviation (excluding temporary construction area)
  - Offshore export cable corridor
  - Offshore HVAC booster station search area

**Note:**  
 \* Order Limit node point coordinates are presented on sheet 5  
 \*\* Limit of Deviation node point coordinates are presented on sheet 5  
 \*\*\* Offshore HVAC booster station search area node point coordinates are presented on sheet 5  
 Due to the complexity of the shape, only key co-ordinates are displayed in the table. Do not recreate vector data (GIS/CAD) from coordinates in the table. If vector data is required, please contact a member of the Orsted GIS team.



Coordinate system: ETRS 1989 UTM Zone 31N  
 Vertical reference: LAT  
 Scale @ A1: 1:80000  
 0 2.5 5 Kilometres  
 0 1 2 Nautical Miles

REV	REMARK	DATE
00	First Issue	May 2018
01	Second Issue	March 2019
---	---	---
---	---	---



# Hornsea Project Three Offshore Wind Farm

## Offshore Order Limits and Grid Coordinates Plan

Sheet 4 of 5

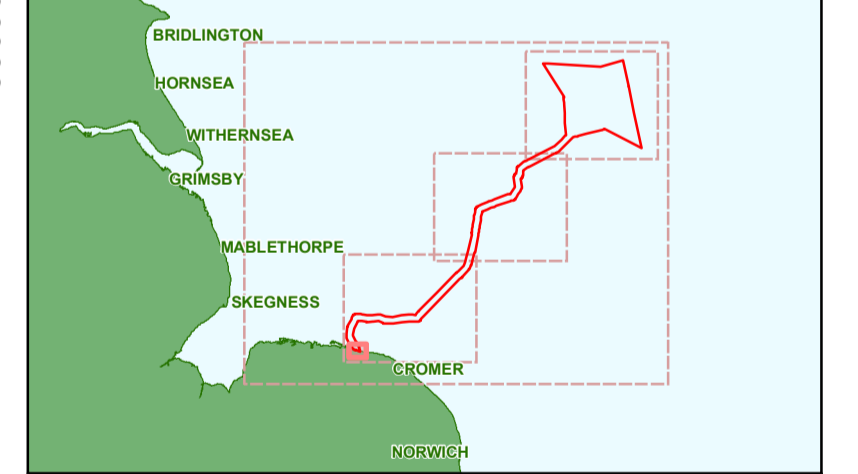
APPF Regulations Reference: S(2)(j)(ii) Application Document Number: A2.2.1

- Hornsea Project Three**
- ① Order limits node (point)\*
  - ② Limit of Deviation node (point)\*\*
  - Order Limits (offshore)
  - Limit of Deviation (excluding temporary construction area)
  - ▨ Offshore export cable corridor

**Note:**  
 \* Order Limit node point coordinates are presented on sheet 5  
 \*\* Limit of Deviation node point coordinates are presented on sheet 5  
 \*\*\* Offshore HVAC booster station search area node point coordinates are presented on sheet 5

Due to the complexity of the shape, only key co-ordinates are displayed in the table. Do not recreate vector data (GIS/CAD) from coordinates in the table. If vector data is required, please contact a member of the Orsted GIS team.

Source:  
 Agreement For Lease © Crown Copyright 2019. All rights reserved.  
 © Crown copyright and database rights 2019 Ordnance Survey. Licence number: 0100031673



Coordinate system: ETRS 1989 UTM Zone 31N  
 Vertical reference: LAT  
 Scale @ A1: 1:10000

REV	REMARK	DATE
00	First Issue	May 2018
01	Second Issue	March 2019
—	—	—
—	—	—
—	—	—

Hornsea Project Three Offshore Wind Farm  
 APPF Regulations Reference: S(2)(j)(ii)  
 Application Document Number: A2.2.1  
 Document no: HODWSAPP13  
 Created by: XAMU  
 Checked by: FELBS  
 Approved by: ANGLU



